

Mini 4S+ PREMIUM PACKAGE

- 1 MINI 4S+ Splicer
- 2 Cleaver Softcase
- 3 MINI 50G+ Cleaver
- 4 Power Cord
- 5 USB Cable
- 6 AC Adapter
- 7 Car Cigar Cable
- 8 Cooling Tray
- 9 Spare Electrode
- 10 SOC Heater Block
- 11 SOC Holder
- 12 2 Battery Packs
- 13 Shoulder Strap
- 14 User Manual CD
- 15 Hand Carrying Case



SPECIFICATIONS

Splicing Method	Active Alignment DAA(Digitalized Active Alignment)	Illumination	LED emitting white light (1 piece)
Average Loss	SM(0.02dB) / MM(0.01dB) / DS(0.04dB) / NZDS(0.04dB) / G.657(0.02dB)	Battery	Typical 200 Cycles (Splice & Heat) / single battery <2 Batteries Standard>
Return Loss	>>60dB	Power Supply	AC 100-240V input or DC 9~14V
Splice Time	8s average SM / SM 7s Quick mode	Monitor	Color 4.3" LCD monitor, with Touch Screen (Tempered Glass)
Electrode Lifespan	>5,500 arcs	Cameras	2 CCD camera system
Applicable Fiber	SM(ITU-T G.652&G.657), MM(ITU-T G.651), DS(ITU-T G.653), NZDS(ITU-T G.655), IT-G657A, IT-G657B / 0.25mm, 0.9mm, 2.0mm, 2.4mm, 3.0mm, FLAT(indoor cable)	Magnification	XY style : 160 power, X/Y : 320 power
Cleaved Length	Coating Diameter < 0.25mm = 5-16mm, Coating Diameter > 0.25mm = 8-16mm minimum	Fiber Display	X/Y or XY, single X.Y
Coating Diameter	100-1,000um	Weight	1.39Kg (without battery)
Cladding Diameter	80-150um	Size	123mm X 124mm X 138 mm
Heating Programs	Factory installed mode : 4, User installable mode : 32	Wind Protection	The max wind speed 15m/s
Heating Time	Typical 15s	Operating Environment	Elevation 0-5,000 meters, -20~60°C, 0~95% relative humidity
Protection Sleeve	40mm, 60mm, SOC Connector	Storage Condition	Temperature -20 to 40°C, 0~95% relative humidity, battery -20~30°C
Data Output	Micro HDMI-USB master device	Pull Test	1.96~2.25N (standard)
Splice Programs	Factory installed mode: 11, User installable mode: 70+	Attenuation splicing	Range : 0.1dB ~ 20dB (0.1dB step)
Splice Memory	Up to 5,000 records and 2,000 splice images		

Mini 4S+

A Frontier Never Follows

Fiberfox is the first manufacturer of an Active Alignment Splicer

1.39
kg

400
cycles

7
sec

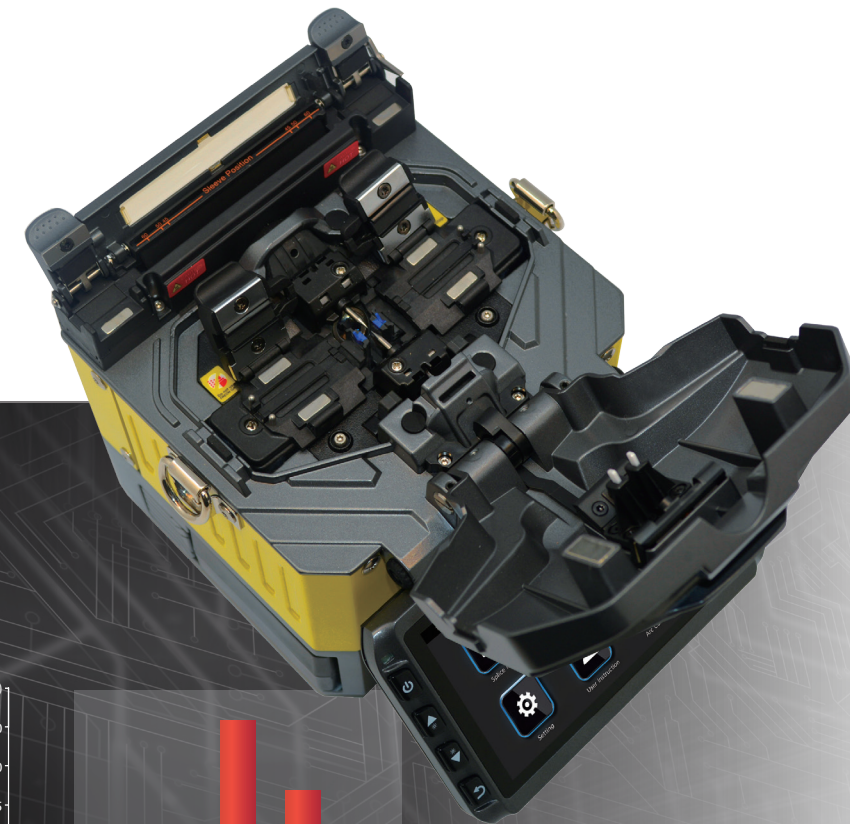
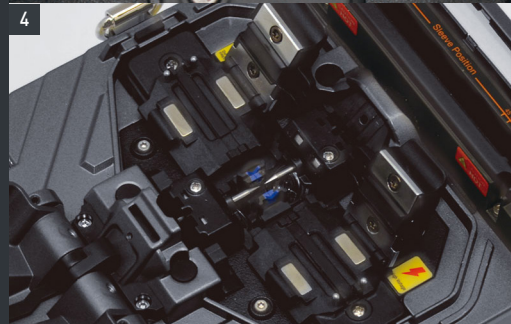
0.02
dB



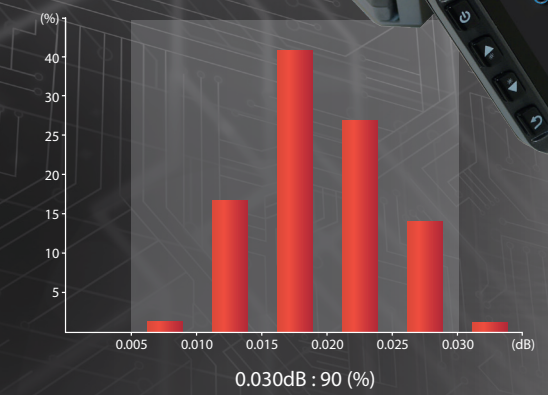


Mini 4S+ CHARACTERISTIC

- 1 Heating Time
15sec with 60mm sleeve
- 2 The Fast Splicing Time
7sec with SM fiber
- 3 400 cycles (splicing & heating)
with Two Batteries
- 4 Universal Holder
250 μ m / 900 μ m / 2~3 Φ / Indoor
- 5 LED Injection System (No Mirrors)
- 6 SOC Compatible



- Elevation
0~5000meter
- The max wind
speed 15m/s
- Temperature
-15~60 $^{\circ}$ C
- relative humidity
0~95%



Performance

Guaranteed Stability and Splicing Performance

