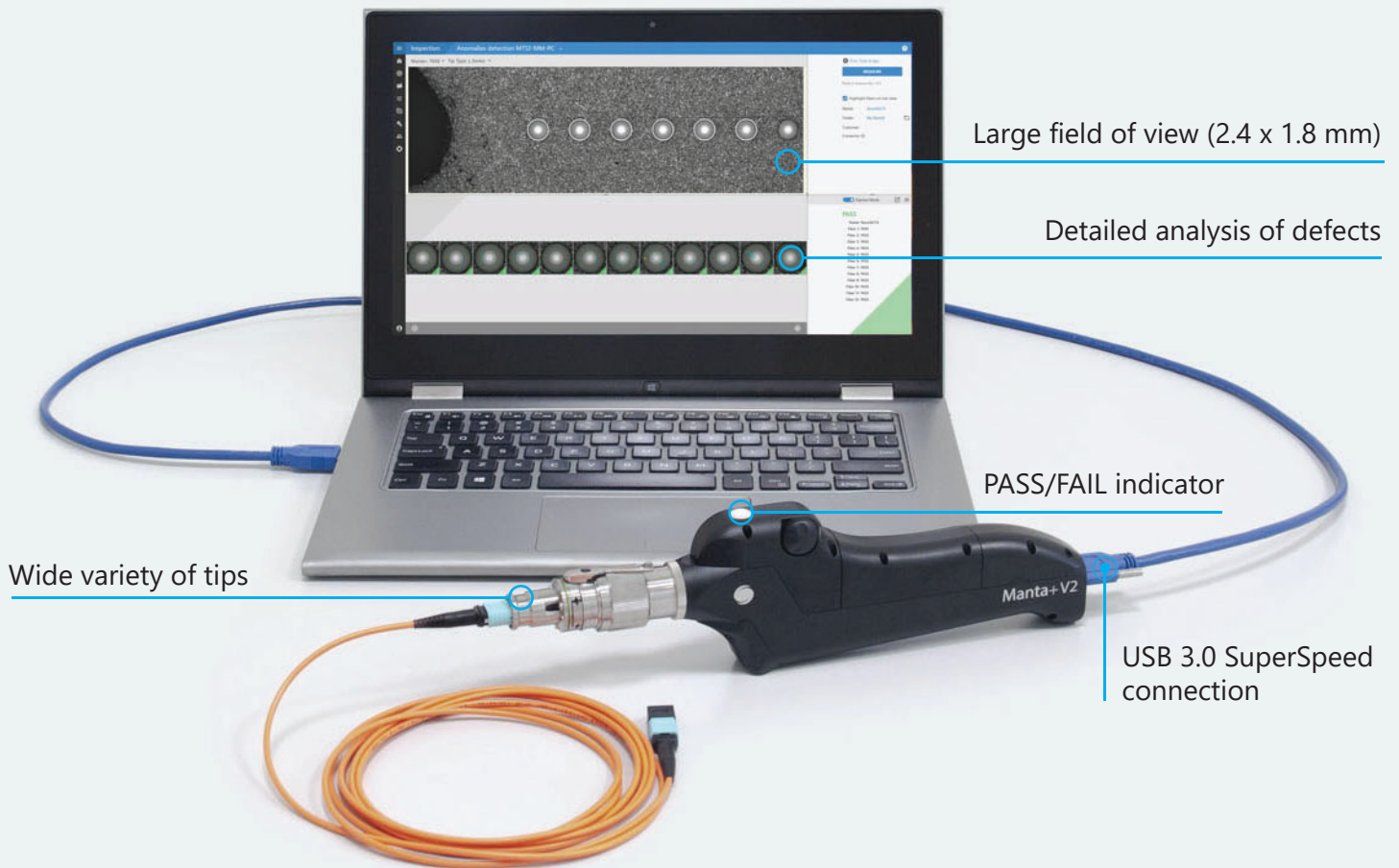


3532 Seagate Way, Suite 100,
Oceanside, CA 92056, USA
<http://www.sumix.com>
E-mail: info-team@sumix.com
Tel.: +1 (877) 233-3385

Manta+V2

microscope probe



Single fiber



Multi-fiber



Auto focus



High resolution



Scratch
detection



Industry
standards



PASS/FAIL
verdict



Up to 96 fibers
in two scans

Application

- field inspection;
- in lab or production as a benchtop microscope (with a cradle)

Specification

Connectors tested: male and female MPO connectors (SM and MM), MT ferrules, LC, FC, SC, E2000™, QSFP, ARINC, MIL-38999, High-power SMA, Avim, mini-Avim, and more. Patchcord and bulkhead side. Custom tips can be developed for special connectors.

NEW: Tips for 3M™ Expanded Beam Optical Connector, ODC®, Q-ODC®, MXC®, HMFOC and CS® connectors added to the range.

Field of view: 2.4 × 1.8 mm

Defect size detection: 0.75 μm

Optical resolution: 1.8 μm

Magnification: 290×

Focus: Autofocus

Camera type: digital, USB3.0, monochrome

Power source: USB 3.0 port of PC

Dimensions (H × W × L): 75 × 28 × 233 mm (2.95 × 1.1 × 9.17 inches)

Weight: 475 g (1.05 lbs)

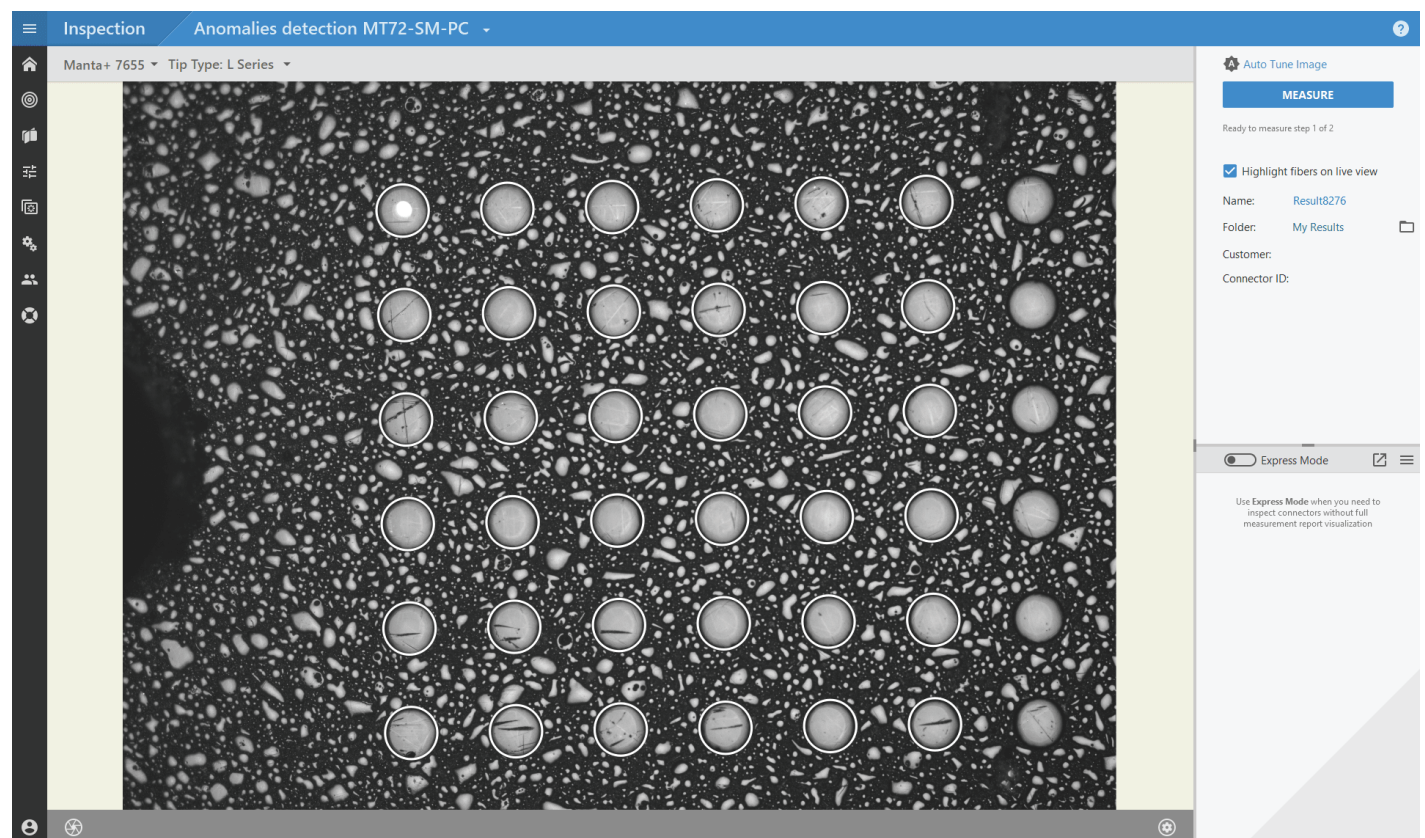
Material: aluminum housing, stainless steel barrel

Compatible with: desktop PC, laptop, tablet

Operating system: Windows 7 SP1 or newer (Windows 10 recommended)

Kit contents: SMX-Manta+V2 microscope, USB 3.0 cable, Case, MaxInspect™ analytical software

NEW: Sumix now offers a variety of optical connector cleaning tools to cover all your inspection and cleaning needs in one purchase.



Live View of MT 72 ferrule