

ConnectorMax Analysis Software

DELIVERING FAST PASS/FAIL ASSESSMENT OF CONNECTOR ENDFACES



ConnectorMax delivers clear-cut pass/fail verdicts, eliminating guesswork in the field and helping you save time and money

KEY FEATURES

Automatic pass/fail analysis in the portable FTB-1, FTB-200 and FTB-500 platforms

Lightning-fast: results in a few seconds through simple one-touch operation

Full test reports for future referencing

Compatible with EXFO's FIP-400 series probes

APPLICATIONS

Connector inspection and certification

Network troubleshooting

IEC/IPC-compliant network acceptance testing

COMPLEMENTARY PRODUCTS



FTB Ecosystem Platforms

FTB-1 | FTB-200 | FTB-500



Fiber Inspector Probe
FIP-400



Software
FastReporter2

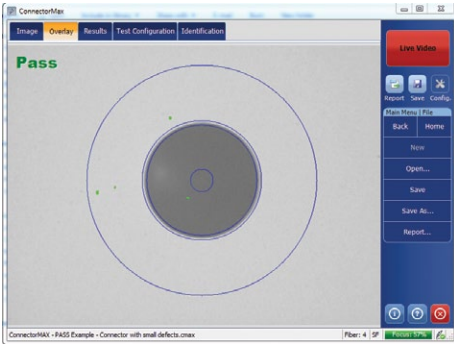
EXFO

OUT WITH GUESSWORK, IN WITH TIME AND MONEY SAVINGS

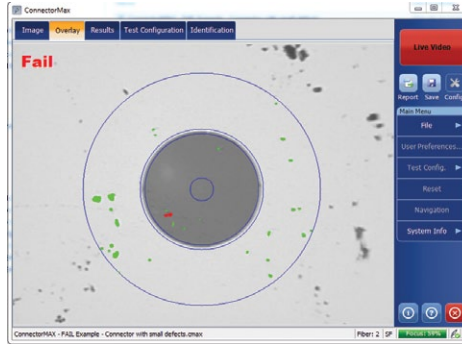
Delivering fast pass/fail assessment of connector endfaces, EXFO's ConnectorMax Analysis Software is designed to save both time and money in the field. The industry's first platform-based, automated inspection application, ConnectorMax eliminates guesswork, instead providing clear-cut connector endface analysis.

ConnectorMax enables field technicians to analyze defects and scratches and measure their impact on connector performance. Results are then compared against pre-programmed IEC/IPC standards or user-defined criteria, leading to accurate pass/fail verdicts established right on-site.

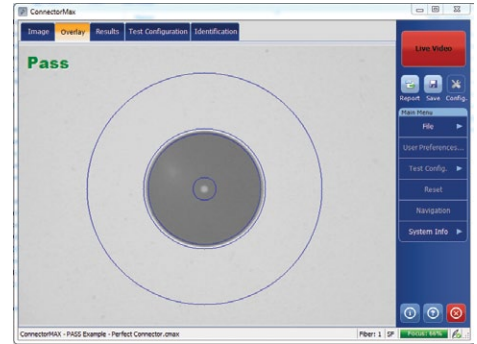
ConnectorMax therefore helps avoid two time- and money-consuming situations: undetected connector defects that force technicians to later return to the site, and unnecessary replacement of connectors whose slight defects are not enough to get a "fail" verdict.



Imperfect connector still meeting acceptance criteria.



Defective connector failing acceptance criteria.



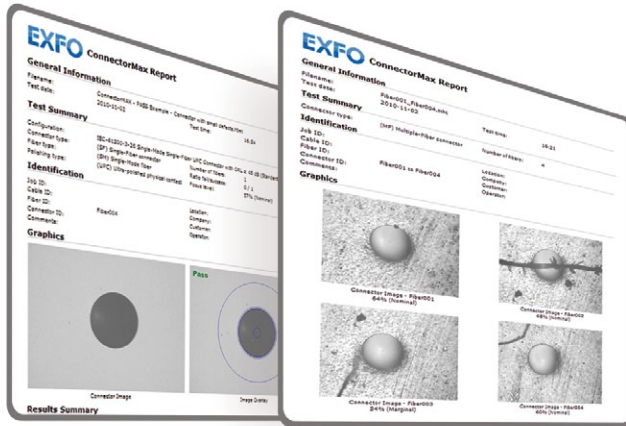
Connector free of any defect.

| KEY FEATURES | BENEFITS | ADDITIONAL FEATURES |
|--|--|--|
| Housed in the FTB-1, FTB-200 and FTB-500 platforms | All-in-one test solution: processing and reporting done on-site—no need for a PC | Autosave and Reset feature for multiple-pass cleaning procedures |
| Quick and easy image capture | Full test reports combining statistical and visual data, for future referencing | Autonaming |
| Clear pass/fail results through simple one-button operation | Simplify and speed up connector assessment in the field | Automatic report documentation in multiple formats |
| Test procedures that comply with IEC 61300-3-35 and IPC 8497-1 standards | Consistent, repeatable results | Multifiber reporting |
| Focus meter | Prevents out-of-focus analysis, ensuring consistent results all the time | Full file documentation (job, cable, fiber, connector and location IDs, customer, operator, company, etc.) |

Document Your Work

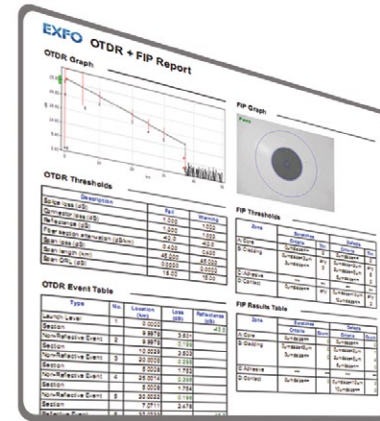
ConnectorMax Analysis Software comes with extensive reporting capabilities enabling you to automatically generate full reports in various formats, including the single-file .mhtml format—right on-site.

Advanced reporting and batch processing capabilities are available through our FastReporter data post-processing software, including combined OTDR and FIP reports. For more information, please consult the FastReporter brochure.



Single fiber connector report.

Multifiber connector report.



OTDR and FIP report (option available with FastReporter).

CONNECTORMAX SOFTWARE GENERAL SPECIFICATIONS

Platform Compatibility

FTB-1, FTB-200*, FTB-500

PC Compatibility and System Requirements

To be able to install and run ConnectorMax on your computer, you must meet the minimum requirements below:

| SYSTEM ELEMENT | MINIMUM REQUIREMENTS (WINDOWS XP) | MINIMUM REQUIREMENTS (WINDOWS VISTA 32 AND 64 BITS) | MINIMUM REQUIREMENTS WINDOWS 7 (32 AND 64 BITS) |
|--------------------|---|---|---|
| Processor | Pentium (800 MHz or higher recommended) | Pentium (1.6 GHz or higher recommended) | Pentium (1.6 GHz or higher recommended) |
| RAM | 256 MB (512 MB recommended) | 256 MB (1 GB recommended) | 512 MB (2 GB recommended) |
| Disk space | 400 MB | 400 MB | 400 MB |
| Monitor | EXFO recommends a minimum screen resolution of 800 X 600 and a color quality value of at least 16 bits. | | |
| Other requirements | .NET Framework 2.0 SP1 DirectX 9.0 (Windows XP, Vista and Windows 7) USB 2.0 (with Windows XP, Vista and Windows 7) | | |

SOFTWARE FEATURES

| | |
|------------------|--|
| Fiber inspection | Single fiber Multiple fiber (software option) |
| Analysis | Single fiber (software option) |
| Reporting format | HTML MHTML |

* Compatible with FTB-200 v2.

Fiber Inspection Probe Compatibility

| TIP DESCRIPTION | TIP CODE | INSPECTION COMPATIBILITY | ANALYSIS COMPATIBILITY (OPTIONAL) |
|---|------------------------|--------------------------|-----------------------------------|
| Universal patchcord tip for 1.25 mm ferrule | FIPT-400-U12M | X | X |
| LC tip for PC bulkhead adapter | FIPT-400-LC | X | X |
| FC and SC APC tip for bulkhead adapter | FIPT-400-FC-SC-APC | X | X |
| Universal patchcord tip for 2.5 mm APC ferrule | FIPT-400-U25MA | X | X |
| Universal patchcord tip for 1.25 mm APC ferrule | FIPT-400-U12MA | X | X |
| ST tip for UPC bulkhead adapter | FIPT-400-ST | X | X |
| FC and SC tip for bulkhead adapter | FIPT-400-FC-SC | X | X |
| Universal patchcord tip for 2.5 mm PC ferrule | FIPT-400-U25M | X | X |
| SC tip for bulkhead adapter (extended) | FIPT-400-SC-L | X | X |
| MU tip for UPC bulkhead adapter | FIPT-400-MU | X | X |
| E-2000 tip for PC bulkhead adapter | FIPT-400-E2000 | X | X |
| FC and SC angled tip for bulkhead (60 degree) | FIPT-400-FC-SC-A6 | X | X |
| MU-L tip for UPC bulkhead adapter | FIPT-400-MU-L | X | X |
| D4 tip for bulkhead adapter | FIPT-400-D4 | X | X |
| Universal patchcord tip for male ferrule | FIPT-400-U20M2 | X | X |
| Lemo tip for bulkhead adapter | FIPT-400-Lemo | X | X |
| E-2000 tip for APC bulkhead adapter | FIPT-400-E2000-APC | X | |
| OptiTap™ tip for APC bulkhead adapter | FIPT-400-OTAP-APC | X | |
| MT/APC type OptiTip™ for male and female connectors | FIPT-400-OTIP-MT-APC | X | |
| MT/APC type OptiTip™ for male connectors | FIPT-400-OTIP-MT-APC/M | X | |
| LC tip for APC bulkhead adapter | FIPT-400-LC-APC | X | |
| LC angled tip for bulkhead adapter (60 degree) | FIPT-400-LC-A6 | X | |
| LX.5 tip for UPC bulkhead adapter | FIPT-400-LX5 | X | |
| LX.5 tip for APC bulkhead adapter | FIPT-400-LX5-APC | X | |
| MTP/APC tip for bulkhead adapter (extended, reversible) | FIPT-400-MTPA2 | X | |
| MTP2 tip for bulkhead adapter (extended, reversible) | FIPT-400-MTP2 | X | |
| MTP2 replaceable nozzle for MTP2 (extended, reversible) | FIPT-400-MTP2-TIP | X | |
| MTPA replaceable nozzle for MTP2 (extended, reversible) | FIPT-400-MTPA-TIP | X | |
| Bulkhead adapter tip | FIPT-400-ADAPTER | X | |
| SMA tip for bulkhead adapter | FIPT-400-SMA | X | |
| SMA tip for male connector | FIPT-400-SMAM | X | |
| Universal patchcord tip for 1.6 mm PC ferrule | FIPT-400-U16M | X | |
| MTRJ tip for bulkhead adapter | FIPT-400-MTRJ | X | |
| SC tip for APC bulkhead adapter (extended) | FIPT-400-SC-APC-L | X | |

Refer to EXFO's documentation or contact your vendor for additional information on the most recent FIP-400 tips that may not be listed above.

HARDWARE GENERAL SPECIFICATIONS

| FIP-400 FIBER INSPECTION PROBE | |
|---|--|
| Size (H x W x D) without tip cap with tip cap | 38 mm x 32 mm x 170 mm (1 1/2 in x 1 1/4 in x 6 11/16 in) 38 mm x 32 mm x 200 mm (1 1/2 in x 1 1/4 in x 7 3/4 in) |
| Weight | 0.2 kg (0.44 lb) |
| Resolution | <2 µm, 0.7 µm (typical) |
| Field of view | 625 µm x 464 µm (low magnification) ^a 412 µm x 306 µm (high magnification) |
| Light source | Blue LED |
| Lighting technique | Coaxial |
| Capture button | Present on all models |
| Connector | EXFO probe port type (8 pin mini-DIN) |
| Focus control | Adjustable on the probe |
| Optical magnification | Adjustable, low and high (dual model only) |
| Temperature operating storage | -10 °C to 50 °C -40 °C to 70 °C |
| Relative humidity | 0 % to 95 % non-condensing |

| FIBER PROBE VIEWER | |
|---------------------|---|
| Size (H x W x D) | 50 mm x 99 mm x 190 mm (1 15/16 in x 3 7/8 in x 7 1/2 in) |
| Weight ^b | 0.3 kg (0.66 lb) |
| LCD screen | 3.5 in TFT active matrix (320 x 240 pixels) |
| Power | Rechargeable Li-ion battery or AC adapter/charger |
| Battery life | 3 hours (continuous use) |
| Charging time | 4 hours |
| Connector | EXFO probe port type (8 pin mini-DIN) |

| USB CONVERTER | USB 1.1 MODEL | USB 2.0 MODEL |
|----------------------------|--|--|
| Size (H x W x D) | 20 mm x 36 mm x 90 mm (3/16 in x 1 7/16 in x 3 9/16 in) | 19 mm x 36 mm x 95 mm (3/4 in x 1 7/16 in x 3 3/4 in) |
| Connectors | EXFO probe port type (8 pin mini-DIN)/USB | EXFO probe port type (8 pin mini-DIN)/USB |
| Capture button | No | Yes |
| ConnectorMax compatibility | No | Yes |

Notes

- a. Dual model only.
b. Without battery.

ORDERING INFORMATION**Platform****FPSA**

Fiber inspection probe analysis software for portable platform

FPSAMF

ConnectorMax kit:

- Single-fiber analysis and reporting
- Multiple-fiber connectors wizard and reporting

PC**FPSA-PC**

Fiber inspection probe analysis software for PC or laptop ^a

FPSAMF-PC

ConnectorMax kit:

- Single-fiber analysis and reporting
- Multiple-fiber connectors wizard and reporting

Note

a. The FIP-400-USB2, USB 2.0 Converter Module is required and sold separately.

EXFO Headquarters > Tel.: +1 418 683-0211 | Toll-free: +1 800 663-3936 (USA and Canada) | Fax: +1 418 683-2170 | info@EXFO.com | www.EXFO.com

EXFO serves over 2000 customers in more than 100 countries. To find your local office contact details, please go to www.EXFO.com/contact.

EXFO is certified ISO 9001 and attests to the quality of these products. EXFO has made every effort to ensure that the information contained in this specification sheet is accurate. However, we accept no responsibility for any errors or omissions, and we reserve the right to modify design, characteristics and products at any time without obligation. Units of measurement in this document conform to SI standards and practices. In addition, all of EXFO's manufactured products are compliant with the European Union's WEEE directive. For more information, please visit www.EXFO.com/recycle. **Contact EXFO for prices and availability or to obtain the phone number of your local EXFO distributor.**

For the most recent version of this spec sheet, please go to the EXFO website at www.EXFO.com/specs.

In case of discrepancy, the web version takes precedence over any printed literature.